



# SOBHA HARTLAND

CREEK VISTAS RESERVÉ





Introducing the

## AL OLA COLLECTION

*A luxury lifestyle with 30 lavish homes over 3 floors  
earmarked for Emiratis and GCC nationals*





## WHY COMPROMISE, WHEN YOU CAN GET EVERYTHING!



### *Most sought-after neighbourhood*

Residences at Sobha Hartland  
get sold within 1-3 months of a  
product launch.



### *Unmatched views*

Exceptional new perspective of  
Downtown Dubai, Dubai Creek and  
Ras Al Khor Wildlife Sanctuary to  
choose from.



### *Sky living*

Experience living in the sky with the  
highest tower ever launched in  
Sobha Hartland.



### *Never-seen-before amenities*

The premium, and much more!  
Infinite amenities for your  
complete well-being.



### *Unique location*

Undoubtedly the best location to  
buy, not only in Sobha Hartland,  
but also in Dubai because of its  
strategic location in MBR City.

## WHY BUY NOW ?

*Creek Vistas Reservé comes with special, limited period LAUNCH prices,  
payment plans & offers.*

### CELEBRATORY PRICING

**1BR** Starting from  
AED 876,000\*

**1BR** Starting from  
AED 999,286\*  
+ STUDY

**2BR** Starting from  
AED 1,301,557\*

### CELEBRATORY PAYMENT PLAN

Down Payment

**10%**

March 2020

1<sup>st</sup> Installment

**10%**

June 2020

Equal Monthly Installments

**AED 5,999**/month

Every 9 months

Bullet Payment

**10%**

Every 10<sup>th</sup> month

Balance on

**Completion**

March 2023

### CELEBRATORY OFFERS

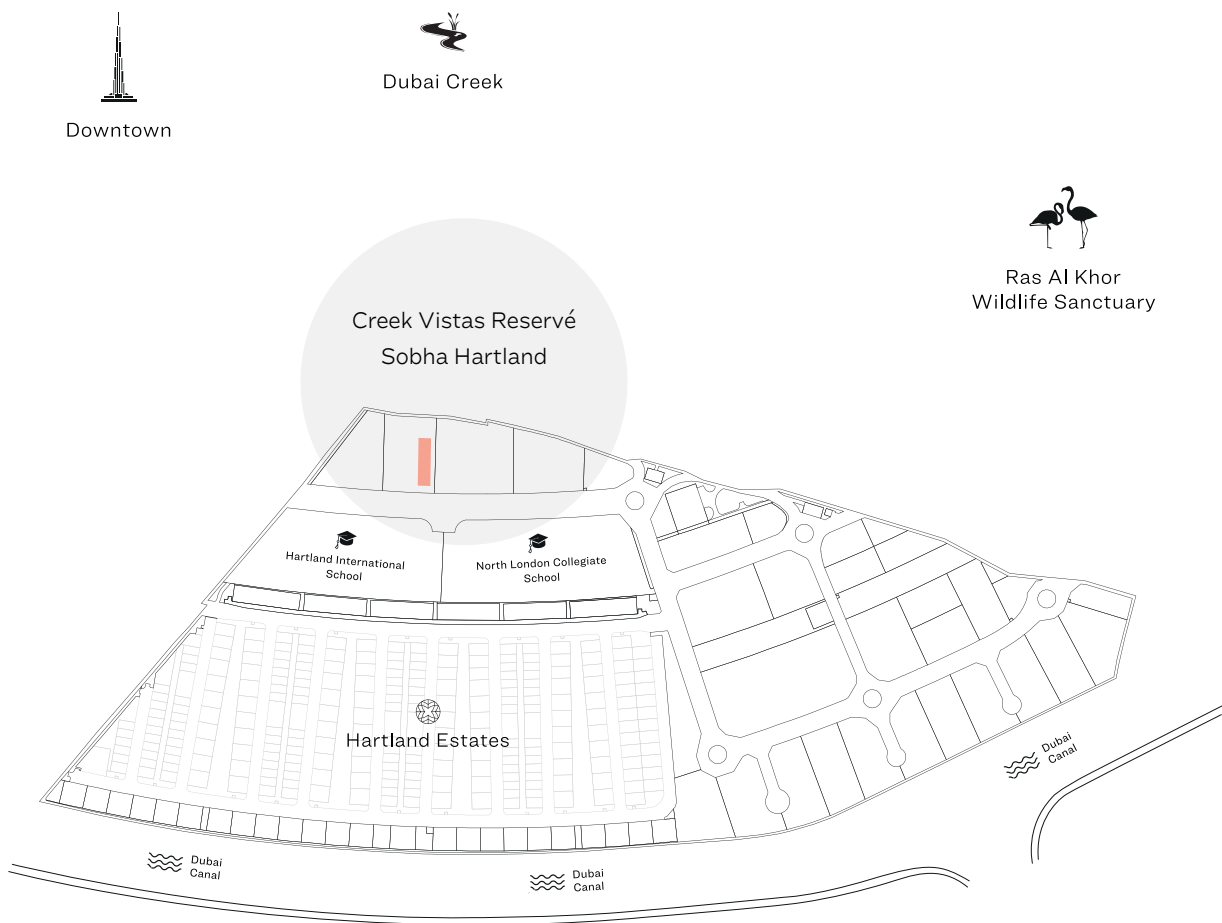


Visit the destination of your choice with a

**HOLIDAY EACH YEAR**

over 3 years

# MASTER PLAN



## APARTMENT FEATURES



Variety of  
unit plans



Impeccable  
interiors



Covered  
Parking



Choice of  
balcony in units

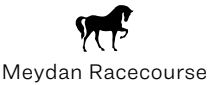


Bedroom  
wardrobe in all units

A RICH TAPESTRY OF EXPERIENCES.  
A WORLD-CLASS LIFESTYLE.

The amenities being introduced are completely unique and available only for residents of this brand new tower.

- 1 BEDROOM TYPE A
- 1 BEDROOM TYPE B
- 1 BEDROOM TYPE C
- 1 BEDROOM TYPE D
- 2 BEDROOM TYPE A
- 2 BEDROOM TYPE B



## 1 BEDROOM APARTMENT

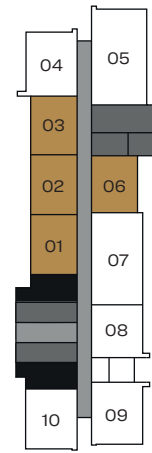
TYPE A (with balcony)

Downtown and Meydan One Mall view

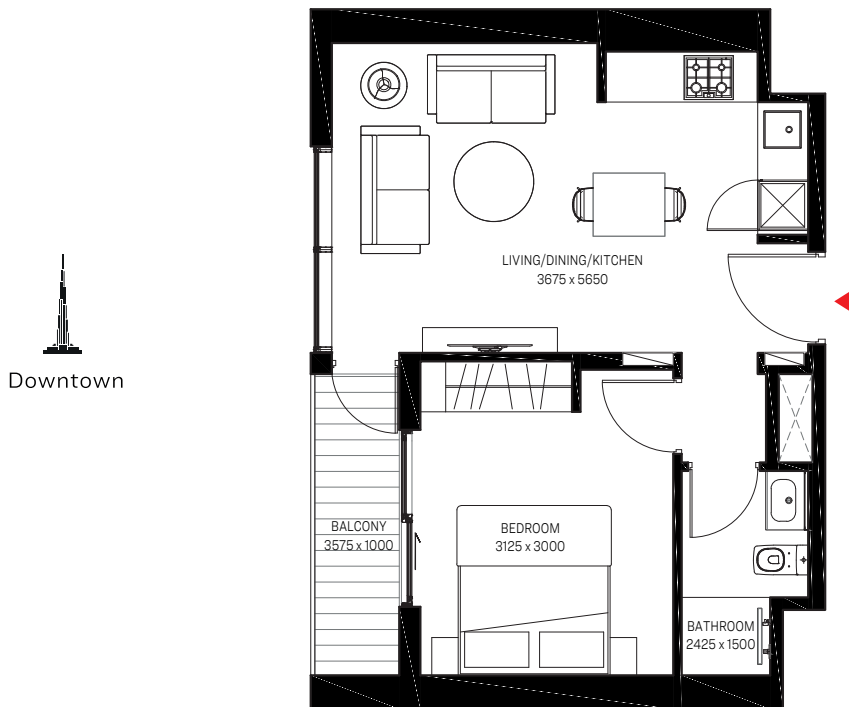
Suite area - 439.06 SQ.FT. / 40.79 SQ.M.

Balcony Area - 49.30 SQ.FT. / 4.58 SQ.M.

Net Saleable Area - 488.36 SQ.FT. / 45.37 SQ.M.



LEVELS 3 - 33



Downtown



Meydan One Mall

1 B E D R O O M   A P A R T M E N T

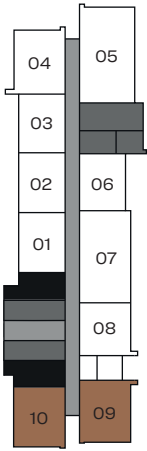
TYPE B (with balcony)

Downtown, Meydan One Mall, Hartland Estates,  
Meydan Racecourse and Dubai Canal view

Suite area - 448.21 SQ.FT. / 41.64 SQ.M.

Balcony Area - 88.16 SQ.FT. / 8.19 SQ.M.

Net Saleable Area - 536.37 SQ.FT. / 49.83 SQ.M.



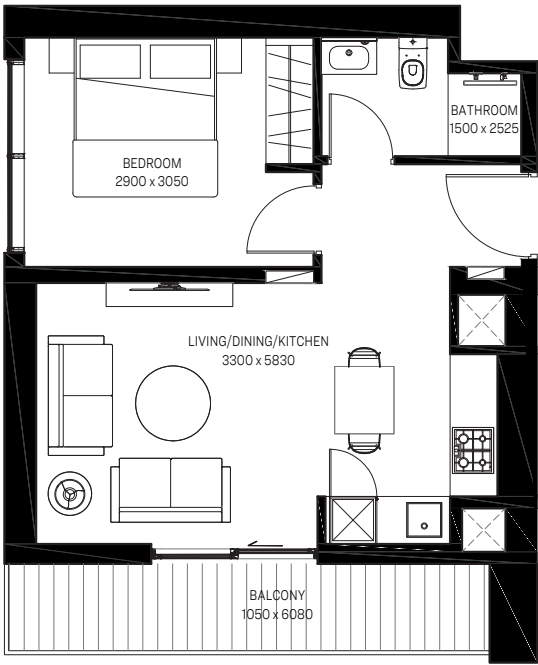
LEVELS 1 - 33



Downtown



Meydan One Mall



Hartland Estates



Dubai Canal



Meydan Racecourse

Disclaimer: 1. All dimensions are in metric, measured to wall finishes. 2. All materials, dimensions & drawings are approximate. 3. Information is subject to change without notice, at developer's absolute discretion. 4. Actual area may vary from the stated area. 5. Drawing are not to scale. 6. All images used are for illustrative purpose only and do not represent the actual size, features, specifications, fittings and furnishings. 7. The developer reserves the right to make revisions/ alterations, at its absolute discretion, without any liability whatsoever.



1 BEDROOM APARTMENT

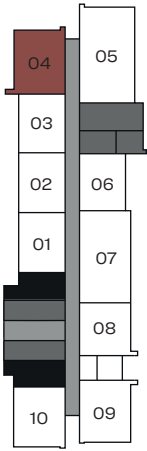
TYPE D (with balcony)

Meydan One Mall, Downtown, Dubai Creek and  
Ras Al Khor Wildlife Sactuary view

Suite Area - 461.56 SQ.FT. / 42.88 SQ.M.

Balcony Area - 100.64 SQ.FT. / 9.35 SQ.M.

Net Saleable Area - 562.20 SQ.FT. / 52.23 SQ.M.



LEVELS 1 - 33



Downtown



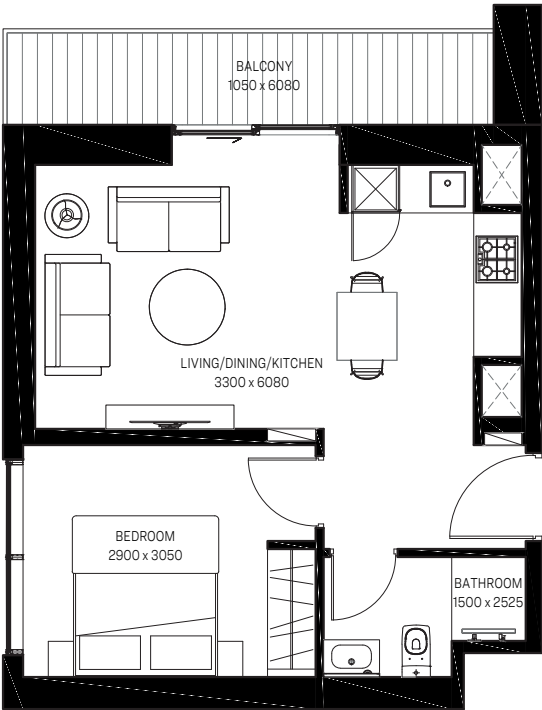
Dubai Creek



Ras Al Khor  
Wildlife Sanctuary



Meydan One Mall



Disclaimer: 1. All dimensions are in metric, measured to wall finishes. 2. All materials, dimensions & drawings are approximate. 3. Information is subject to change without notice, at developer's absolute discretion. 4. Actual area may vary from the stated area. 5. Drawing are not to scale. 6. All images used are for illustrative purpose only and do not represent the actual size, features, specifications, fittings and furnishings. 7. The developer reserves the right to make revisions/ alterations, at its absolute discretion, without any liability whatsoever.

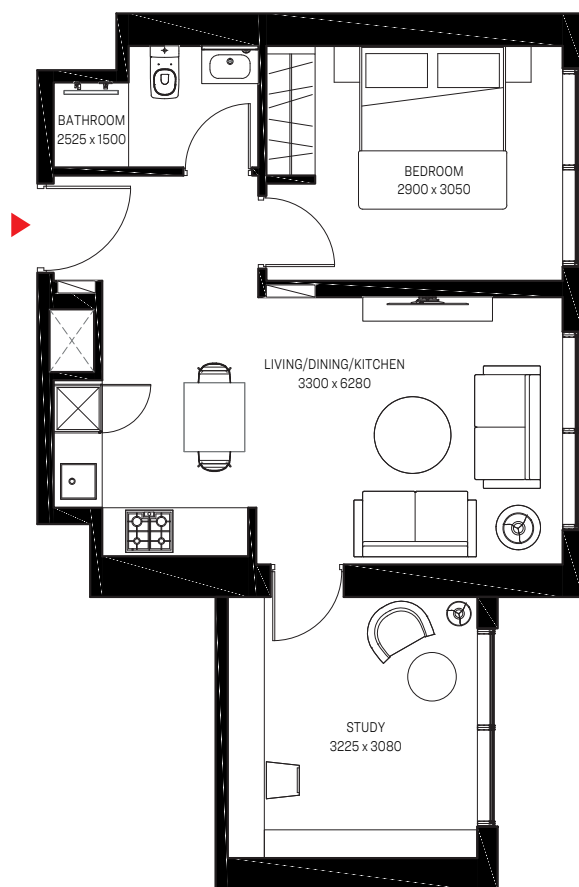
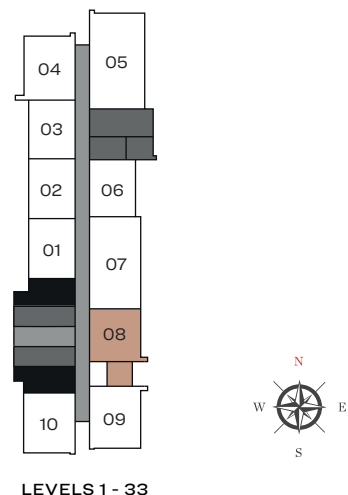
# 1 BED ROOM + STUDY APARTMENT

## TYPE C

Ras Al Khor Wildlife Sactuary view, Dubai Canal and  
Meydan Racecourse

Suite area - 584.16 SQ.FT. / 54.27 SQ.M.

Net Saleable Area - 584.16 SQ.FT. / 54.27 SQ.M.



Ras Al Khor  
Wildlife Sanctuary



Dubai Canal



Meydan Racecourse

# 2 BEDROOM APARTMENT

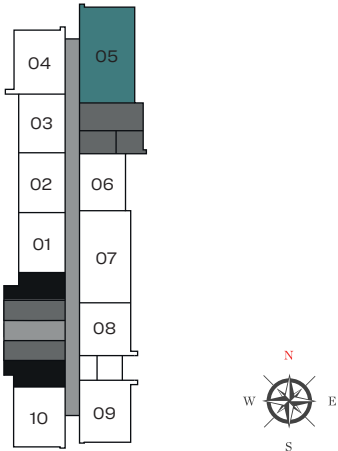
TYPE A (with balcony)

Downtown, Dubai Creek, Ras Al Khor Wildlife Sactuary view,  
Dubai Canal and Meydan Racecourse

Suite Area - 833.88 SQ.FT. / 77.47 SQ.FT.

Balcony Area - 109.36 SQ.FT. / 10.16 SQ.M.

Net Saleable Area - 943.24 SQ.FT. / 87.63 SQ.M.



LEVELS 1 - 33



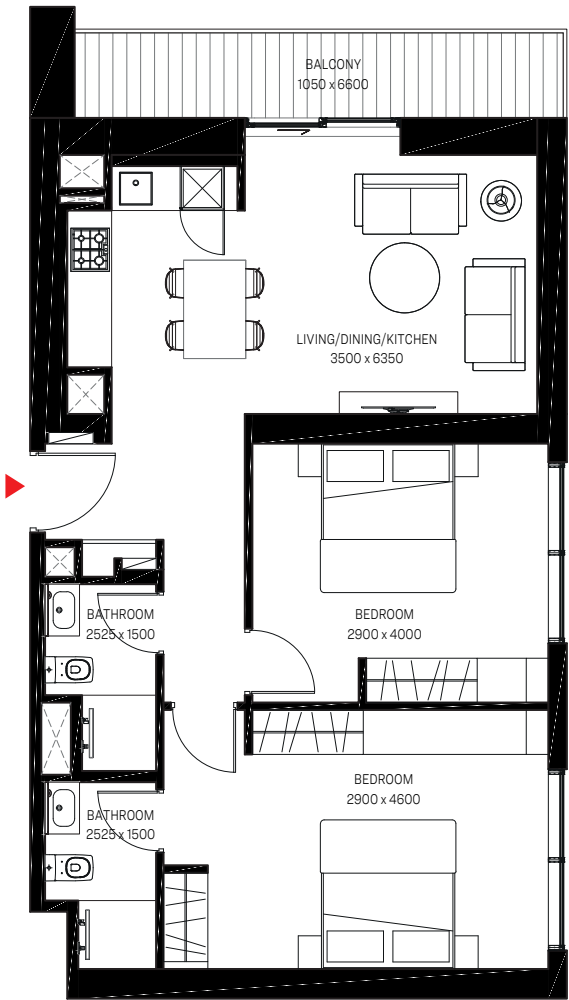
Downtown



Dubai Creek



Ras Al Khor  
Wildlife Sanctuary



Dubai Canal



Meydan Racecourse

Disclaimer: 1. All dimensions are in metric, measured to wall finishes. 2. All materials, dimensions & drawings are approximate. 3. Information is subject to change without notice, at developer's absolute discretion. 4. Actual area may vary from the stated area. 5. Drawing are not to scale. 6. All images used are for illustrative purpose only and do not represent the actual size, features, specifications, fittings and furnishings. 7. The developer reserves the right to make revisions/ alterations, at its absolute discretion, without any liability whatsoever.

2 BEDROOM APARTMENT

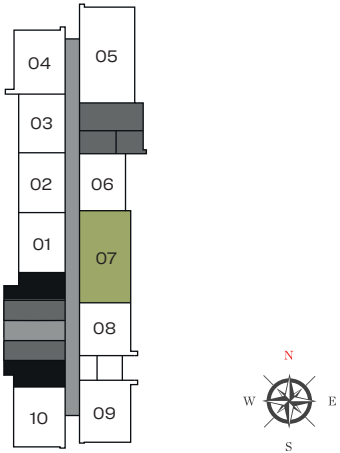
TYPE B (with balcony)

Ras Al Khor Wildlife Sactuary view, Dubai Canal and  
Meydan Racecourse

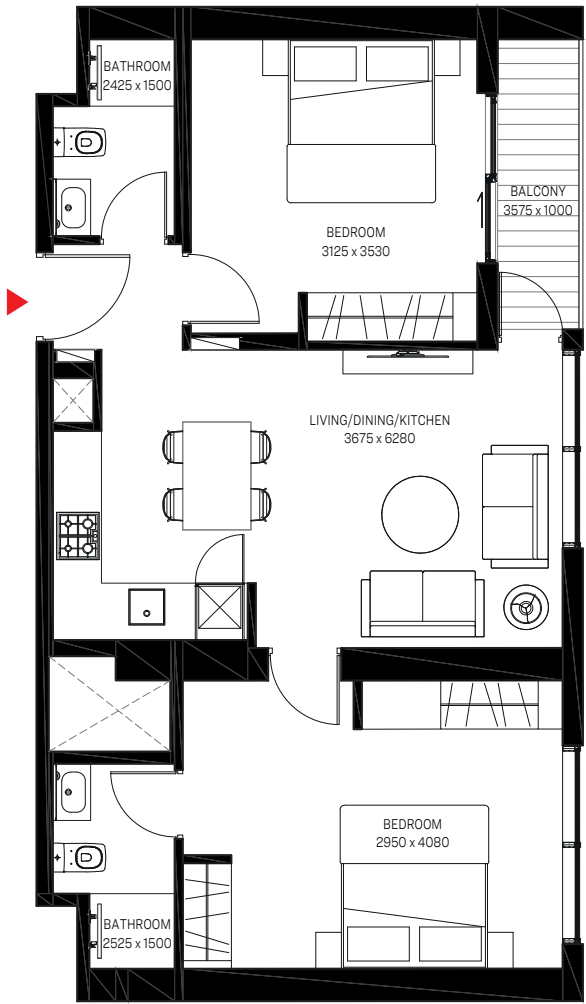
Suite Area - 746.69 SQ.FT. / 69.37 SQ.M.

Balcony Area - 49.30 SQ.FT. / 4.58 SQ.M.

Net Saleable Area - 795.99 SQ.FT. / 73.95 SQ.M.



LEVELS 1 - 33



Ras Al Khor  
Wildlife Sanctuary



Dubai Canal



Meydan Racecourse

Disclaimer: 1. All dimensions are in metric, measured to wall finishes. 2. All materials, dimensions & drawings are approximate. 3. Information is subject to change without notice, at developer's absolute discretion. 4. Actual area may vary from the stated area. 5. Drawing are not to scale. 6. All images used are for illustrative purpose only and do not represent the actual size, features, specifications, fittings and furnishings. 7. The developer reserves the right to make revisions/ alterations, at its absolute discretion, without any liability whatsoever.





# FIDU PROPERTIES

菲 | 度 | 房 | 地 | 产

CHINA - DUBAI

## CONTACT US

FOR MORE INFORMATION



# 800 299

# +971 52 599 9999

☎ 04 339 9222 ✉ [info@fiduproperties.com](mailto:info@fiduproperties.com) 🌐 [www.299.com](http://www.299.com)

P.O Box: 50910 Emaar Square Building 4, Office #404 & 408  
Downtown Dubai

**f** **t** **in** **▶** **📷** /fiduproperties